



AUTUMN / WINTER COLLECTION 2019

**CARE HOME**



# WHY DUNI

## DESIGN FOR ALL OCCASIONS

Choose from our rich selection of seasonal and festive designs to get the perfect match with your concept and mealtime.

## ACT SUSTAINABLY

Look after your residents and nature with top-quality eco-conscious materials.

## PERSONALISE EXPERIENCES

Delight residents with custom designs and colours.

### GET THE LOOK:

DIVINE TIME, DUNISOFT® Napkin, 40 x 40 cm, art no 188283 / DIVINE TIME, DUNICEL® Tête-a-tête, 0,4 x 24 m, art no 188295 / CANDLE HOLDER BLISS, art no 176149 / LED MINI LAMP SET, Rechargeable, art no 186495

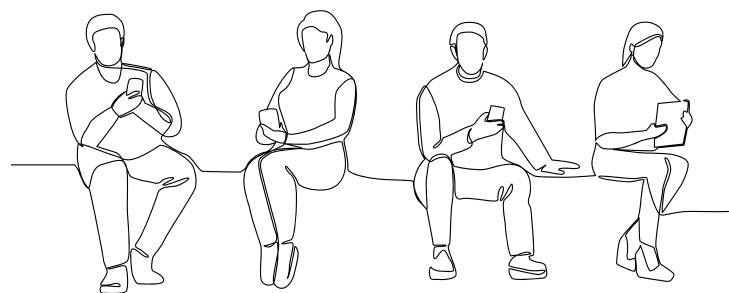


## WORK SMARTER

Save time with flawless colours, folds and hygiene.

## MIX AND MATCH

Our collection is colour-coordinated and split into 'mood' tiers: WOW, JOY and GO.



## GET INFORMED, GET INSPIRED!

To help you get the most out of our Autumn/Winter 2019 collection, our in-house experts share handy tips and suggestions throughout this brochure:

**LAURENCE ROCCHINI** has in-depth knowledge of all our materials, colours and designs. She offers her thoughts on how to optimise your residents' experiences and work with maximum efficiency.


**MIA LARSSON**, our expert on lighting solutions for professionals, offers guidance into how to get the most from our LEDs and candles, and get your ambience just perfect.

**SIMI GAUBA**, our Head of Design, provides creative insights to help you to choose the best designs for your needs.

Also, keep an eye out for 'work hacks' – links to our YouTube videos show ways to streamline operations and boost staff productivity.

STAND FOR SUSTAINABILITY	p 04
WOW, JOY, GO	p 07
BREAKFAST	p 10
LUNCH	p 12
DINNER	p 14
BREAK / IN ROOM	p 18
LIGHTING	p 20
BÄCKAHÄSTEN CUT FOOD WASTE IN HALF	p 22






Hygienic and  
compostable  
wet wipes

Made from grass for  
minimal environmental  
impact

# STAND FOR SUSTAINABILITY

These products are just a small selection of items from our ecoecho® range. You'll find many more at [duni.com](https://duni.com).



Refill cup is  
made of recycled  
and recyclable  
plastic

100% renewable, fully  
traceable stearin

Bamboo absorbs 5x more  
CO<sub>2</sub> and produces 35% more  
oxygen than other plants in  
the same space

## CERTIFICATIONS THAT INSPIRE CONFIDENCE

The products in our collection  
carry a variety of environmental  
and quality certifications.  
Here's what they mean:

### ecoecho®

To qualify as ecoecho®, a significant part of the  
product must live up to at least two of these  
environmental standards: resource efficiency,  
renewability, compostability or responsible  
sourcing.



The OK Compost label, from the certification  
body TÜV Austria, indicates that the product is  
suitable for industrial composting and meets the  
stringent requirements of the European standard  
EN 13432.



The Forest Stewardship Council® (FSC)  
certification ensures the product is made  
of wood from forests managed in an  
environmentally appropriate, socially beneficial  
and economically viable manner.



The Nordic Swan Ecolabel identifies the best  
products on the market from an environmental  
point of view. For instance, it confirms our stearin  
candles consist of 90% renewable materials and  
minimise soot emissions.



The RAL Quality Mark is awarded by the  
European Quality Association for Candles. It  
guarantees the candle burns cleanly, contains no  
hazardous materials, retains its shape and is safe  
and reliable.





## A FESTIVE TREAT.



Want to delight your residents, and their visitors, this Xmas? New Dunilin® napkins fold beautifully and offer the ultimate linen look and feel. Always flawless colour and shape, they never need to be checked or laundered. That frees up valuable time. Even better, after use you can put them out for composting. It is the season to care, after all.

DARE TO COMPARE DUNILIN® VS. LINEN AT [DUNI.COM](https://www.duni.com)



**WOW**

## LUXURIOUS & SPECTACULAR – **THAT'S WOW!**

### **EXCLUSIVITY. LUXURY. FINESSE.**

These words characterise the effortlessly elegant solutions in the WOW family.

If you want to treat your residents to a super-sophisticated yet understated mood, WOW is the place to start.

---

**WANT TO CREATE A SPECIFIC AMBIENCE?**  
**USE OUR WOW, JOY AND GO TIERS TO FIND THE QUALITIES THAT MATCH YOUR VISION**





JOY

## FRIENDLY & CONTEMPORARY – **THAT'S JOY!**

### **COLOURFUL. VIBRANT. CONFIDENT.**

All the solutions in the JOY family wear a big smile. Laid-back yet energetic, you can use them to infuse the air with feel-good factor. When the occasion calls for cool yet casual, JOY should be your first port of call.

---

**CREATE GOODFOODMOOD YOUR WAY  
FEEL FREE TO MIX AND MATCH BETWEEN WOW, JOY AND GO!**





**GO**

## ALL-PURPOSE & PRACTICAL – **THAT’S GO!**

### **CHEERFUL. SIMPLE. RELIABLE.**

You can depend on the solutions in the GO family. To look good. To perform well. To make handling, setting and clearing easier. With small means you can make a difference for your residence. Despite an 'everyday' budget, go straight to GO!

---

**SPARK YOUR IMAGINATION.**

**CHECK OUT THE WOW, JOY AND GO FILM ON  YouTube /DUNITABLESETTINGS**

# BREAKFAST

GO

Help residents to get the nourishment they need with coordinated unicolours and seasonal designs

## TIP!

### LIVEN UP THE ROOM

Get your residents happily chatting from the word 'go' with a festive theme.

#### 1. NEW! STAR STORIES RED

#### MATCHING COLOURS

RED

BORDEAUX

GOLD

1. Tissue Napkin, Bordeaux, 40 x 40 cm, art no 2733 / **STAR STORIES RED** Paper placemat, 30 x 40 cm, art no 188234 / **CANDLE HOLDER BLISS**, 100 x Ø 80 mm, art no 183193
2. **WINTER MORNINGS** Tissue Napkin, 33 x 33 cm, art no 184887 / **WINTER MORNINGS**, **DUNICEL®** Placemat, art no 184984
3. **DUNISOFT®** Napkin, Chestnut, 40 x 40 cm, art no 174025 / **HANA**, **DUNICEL®** Slipcover, art no 184910 / **CANDLE HOLDER HOPE**, 140 x 70 mm, art no 183188





**CAN CARE HOME MANAGERS  
TRANSLATE CREATIVITY INTO A  
BETTER START TO THE DAY FOR  
RESIDENTS?**

*"Sure. Breakfast is an ideal time to energise the mood by playing with the colours and designs of napkins, table covers and LEDs. This can also help to ensure everyone gets the sustenance they need."*

**LAURENCE ROCCHINI**  
MARKETING DIRECTOR, TABLE TOP



# LUNCH

JOY

## TIP!

### HIT THE SWEET SPOT

A festive setting adds to residents' quality of life. But keep it simple. Complexity may confuse residents.

Extra soft **DUNISOFT®** offers excellent absorbency

#### MATCHING COLOURS

CREAM

DARK GREEN

CHESTNUT

#### 1. NEW! STAR STORIES GREEN

1. STAR STORIES GREEN, DUNISOFT® Napkin, 40 x 40 cm, art no 188284 / STAR STORIES GREEN, DUNICEL® Slipcover, 84 x 84 cm, art no 188257 / CANDLE HOLDER BLISS, 100 x Ø 80 cm, art no 183193 / LED MINI LAMP SET, Rechargeable, art no 186495
2. ALPS Tissue Napkin, 33 x 33 cm, art no 184888 / ALPS, DUNICEL® Slipcover, art no 184915 / CANDLE HOLDER HOPE, 140 x 70 mm, art no 183188
3. CANDLE HOLDER SHIMMER, White, 100 x Ø 80 mm, art no 188173
4. DUNISOFT® Napkin, Granite Grey, 40 x 40 cm, art no 168393 / LINEN SNOW, DUNICEL® Tête-à-Tête, 0,4 x 24 m, art no 188296 / CANDLE HOLDER SHIMMER, White, 100 x Ø 80 mm, art no 188173
5. GRUBBEN, DUNISOFT® BIB, art no 174444 / CANDLE HOLDER BILLY, White Metal, 140 x Ø 75 mm, art no 174418





## CAN SOFT MATERIALS LIKE DUNILIN®, DUNISOFT® AND EVOLIN® HELP WITH THE INTELLIGIBILITY OF SPEECH AT THE TABLE?

*"Yes, soft surfaces can help to optimise acoustic conditions at the table. This is an important consideration, as often tables are home to hard surfaces that can make conversations difficult to hear. Anything that helps makes speech easier to understand can be a big advantage – particularly for the elderly who face hearing challenges."*

**LAURENCE ROCCHINI**  
MARKETING DIRECTOR, TABLE TOP



# DINNER

JOY

Colourful JOY designs  
liven up any meal

## TIP!

### FIRE ALL THE SENSES

Combine energising colours, tactile materials, music and tasty aromas to make meals more pleasurable – and help ensure residents get the nutrition they need.

#### 1. NEW! PUMPKIN SPICE

#### MATCHING COLOURS

CREAM

MANDARIN

DARK  
GREEN

1. PUMPKIN SPICE, DUNISOFT® Napkin, 40 x 40 cm, art no 188151 / PUMPKIN SPICE, DUNICEL® Slipcover, 84 x 84 cm, art no 188040 / CANDLE HOLDER SHIMMER, Rust, 100 x Ø 80 mm, art no 188175

2. PUMPKIN SPICE, DUNISOFT® Napkin, 40 x 40 cm, art no 188151

3. STAR STORIES CREAM DUNISOFT® Napkin, 40 x 40 cm, art no 188282 / STAR STORIES CREAM, DUNICEL® Tête-à-Tête, 0,4 x 24 m, art no 188293 / CANDLE HOLDER BLISS, 140 x Ø 75 mm, art no 176149





NEW! PUMPKIN SPICE 2.



NEW! STAR STORIES CREAM 3.



## HOW CAN FESTIVE DECORATION HELP RESIDENTS STAY CONNECTED?

*"Sometimes, residents can lose track of seasons, especially if they don't go outside much. Festive designs are a big help when it comes to keeping them engaged with the time of year and each other. And that can have a very positive knock-on effect for the whole care home."*

**SIMI GAUBA**, HEAD OF DESIGN



TIP!

INSPIRE FOND MEMORIES

Classic festive motifs like stars and pine can recall warm memories of Christmases gone by. And that makes for happier residents and a happier mood all-round.

JOY

1. NEW! COZY WINTER

MATCHING COLOURS

RED

CHESTNUT

GREIGE

WOW

2. NEW! LINEN SNOW

JOY

Eco-conscious, tactile, robust bamboo

3. NEW! BROTHER

16



PLACEMATS,  
NAPKINS and  
TABLE COVERS can  
enhance acoustic  
comfort

#### MATCHING COLOURS

RED

BORDEAUX

GOLD

**NEW! STAR STORIES RED** 4.

1. DUNISOFT® Napkin Red, 40 x 40 cm, art no 140451 / COZY WINTER, DUNICEL® Slipcover, 84 x 84 cm, art no 188258 / CANDLE HOLDER FLEXIBLE, Frosted Glass, 100 x Ø 80 mm, art no 183189
2. LINEN SNOW, DUNILIN® Napkin, 40 x 40 cm, art no 188325 / EVOLIN® Table cover, White, 127 x 220 cm, art no 164172 / CANDLE HOLDER SHIMMER, White, 100 x Ø 80 mm, art no 188173
3. Good concept, LED LAMP BROTHER Bamboo, 105 x 110 mm, art no 188170
4. STAR STORIES RED, DUNISOFT® Napkin, 40 x 40 cm, art no 188280 / STAR STORIES RED, DUNICEL® Slipcover, 84 x 84 cm, art no 188255 / CANDLE HOLDER BLISS, 200 x Ø 120 mm, art no 183192 / LED LOOP MOODISON, Gold, 5 m, art no 176153

# BREAK

JOY

## TIP!

### GIVE YOUR TEAM A BREAK TOO

Neat touches, like our tissue napkins, paper placemats, coasters and doilies make light work of small spills. The result? Less time spent on cleaning; more time to spend on caring.

Classic festive motifs recall warm memories

#### 1. NEW! PINE CONES

#### MATCHING COLOURS

OCEAN  
TEAL

CHESTNUT

ECO  
BROWN

#### 2. WINTER MORNINGS

COCKTAIL NAPKINS  
support dining with  
dignity



# IN ROOM



GO

ALPS 4.



## LED MINI LAMPS

have a night light function, which makes them ideal for residents' rooms.

3.

1. Tissue Napkin, Ocean Teal, 24 x 24 cm, art no 186353 / PINE CONES, DUNICEL® Slipcover, 84 x 84 cm, art no 188066 / Good concept, LED LAMP SISTER, Bamboo, 110 x 110 mm, art no 186425
2. WINTER MORNINGS, DUNICEL® Slipcover, art no 184914 / DUNISOFT® Napkin, Granite Grey, 20 x 20 cm, art no 178636 / CANDLE HOLDER BLISS, 140 x Ø 75 mm art no 178478
3. LED MINI LAMP SET, Rechargeable, 3 pcs, 13 h burn time, art no 186496
4. ALPS Tissue Napkin, 33 x 33 cm, art no 184888 / LED LAMP ELEMENT, art no 181014

# ILLUMINATE NATURE'S BEAUTY

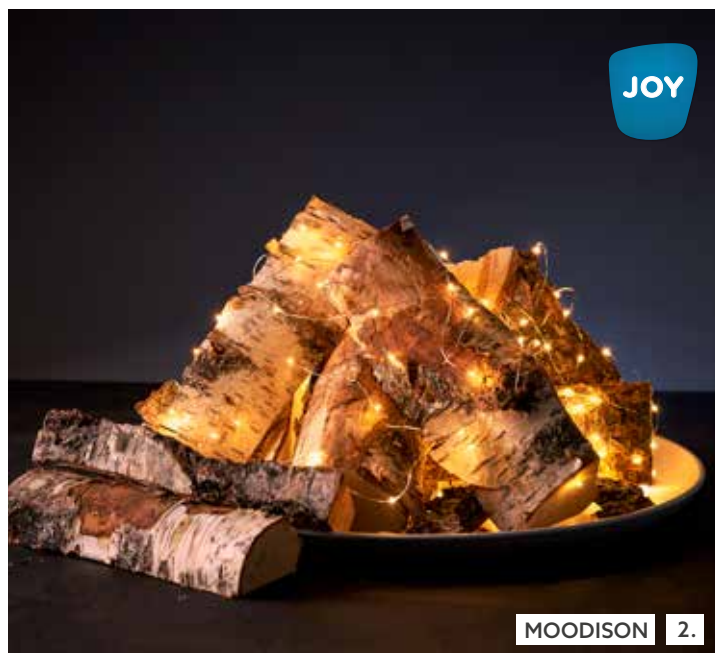
The majestic harmony of a giraffe's pattern. Zebra stripes that radiate subtle energy. Branches gently swaying in the crisp winter's air. Many of the new candle holder designs for this Autumn/Winter collection are inspired by the infinite magic of the ecosphere. That way, they let you create rewarding guest experiences coloured by a sense of cosiness and connection to nature.



## 1. NEW! SAFARI

1. SAFARI CANDLE HOLDERS, Metal, Black, 75 x 75 mm, GIRAFFE art no 188176, ZEBRA, art no 188177, LEOPARD, art no 191159 / LED MINILAMP SET, Rechargeable, multicolour, 8 pcs, art no 186495
2. LED LOOP MOODISON, Gold, 5 m, art no 176153
3. CANDLE HOLDER CALM, Clear, Glass, 80 x Ø 80 mm, art no 191464
4. CANDLE HOLDER SHIMMER, Rust, Frosted glass, 100 x 80 mm, art no 188175





### WHAT MAKES DUNI LEDS A NEAT FIT FOR CARE HOMES?

*"Our LEDs are safe in many ways. There is no flame so they meet any fire regulations. Plus, there is no cord, which can be a potential hazard. Of course, this means you can use them to bring cosy, ambient light to virtually any space, from bedrooms to lounges. What's more, they won't break if knocked to the ground."*

**MIA LARSSON**  
CATEGORY MANAGER FOR CANDLES &  
ACCESSORIES, TABLE TOP





# MATILDA – THE STORY OF HOW BÄCKAHÄSTEN CUT FOOD WASTE IN HALF

**1/3** of all food produced in the world – approximately **1.3 billion tonnes** is wasted every year.

At Bäckahästen care home outside Trelleborg, in southern Sweden, unnecessary food waste is now a thing of the past. Since the introduction of the new ordering system – Matilda – many things have changed. A new way of planning and individually tailored orders have paved the way for both enjoyable and sustainable meals.

It's Friday afternoon and approaching coffee time at Bäckahästen care home. The plates of cakes and biscuits are set out on the dining table and the residents arrive one by one to sit and enjoy a quiet moment. The plates have not been set down randomly. On the contrary, quite some planning has gone into today's choice of treats.

Matilda plays a major role in all this. But we're not talking about a member of staff here, as you might think. This is the name of a brand new ordering system that has been procured and specially adapted by dietician Charlotte Thelander at Trelleborg Municipality.

*"We started talking about food waste," explains Bäckahästen's General Manager, Margareta Lindquist. "We were throwing away a lot. The food was ordered in portions, and we often got more than the individual guest would eat. We wanted to find a way of reducing food waste, while at the same time making sure that our residents enjoy their meals. We were in close dialogue with the dietician at the municipality, who eventually came back to us with an extremely well-developed idea."*

## NEW TIMES

The idea, named Matilda, is an ordering system that works as follows: an appointed contact at each care home receives a

weekly menu that they then tailor to the wishes of the diners.

*"Matilda has really changed our mealtimes for the better," says Jessica Persson, a healthcare assistant at Bäckahästen in charge of dealing with the meal orders. "Our residents now have a new level of choice and are able to take decisions about their meals. I talk to each of them before I place the order, so I can check what kind of sides they want and how much food they think they'll eat. A fish dish comes with a choice of rice, potatoes or mash, for example, and all the residents have their preferences. We used to throw away so much of these side dishes, But now the residents are eating better and we've cut our food waste by half. That feels fantastic!"*

Jessica has been working with Matilda for a year so far. All the orders are placed for two weeks at a time, using special software. And although the system is easy to use now, the preparations for its introduction had to be meticulous.

*"When we first started everything was new, and the switch didn't just affect those of us who work here. The residents also had to be brought on board," continues Margareta. "We're kind of a pilot project. We began by attending a training course, and then we've had constant follow-up with the dietician at the municipality."*





*"Our residents now have a new level of choice and are able to take decisions about their meals. As a result we've cut our food waste by half. That feels fantastic!"*

MARGARETA LINDQUIST, GENERAL MANAGER AT BÄCKAHÄSTEN

### IMPORTANT CONVERSATIONS

Matilda is brought up early on when residents move in. Conversations take place before the move itself about what a guest does and doesn't like. *"Then we follow up on this, as tastes can change. Suddenly someone who has never eaten fish before might want to eat fish."*

Thanks to the new way of ordering, the diners express more of their own preferences. And food that was once thrown away is now put to use.

*"We utilise the food in a whole different way,"* explains Jessica. *"Leftovers like meatballs, for example, are turned into a filling for sandwiches at breakfast the next day. And we do the same with herring and eggs."*

### A LANGUAGE EVERYONE UNDERSTANDS

Working with Matilda has also involved a close dialogue with the central kitchen, with everything recorded and measured. A joint follow-up procedure has brought about a much better mutual understanding.

*"We now speak the same language and we understand each other better when we discuss portion sizes and preferences. We're working towards the same goal, which has also led to improved efficiency and once again – less food waste,"* continues Margareta.

The residents also get to have their say by giving feedback.

*"Everything is so different now, there's been a huge change!" Jessica adds. "Before, the food came in big portions, everything looked the same and there was no choice. With the new system, you can really see how residents are eating everything on their plate. And the staff are much more aware, too. We don't serve up as much and we keep a closer eye on what each person eats."*

As part of its ongoing development, Matilda is currently awaiting an update that includes the option to specify whether the food is to be served hot or cold. And the system gives a much clearer picture about what foods go down well.

*"Mashed potato is really popular! Pasta too. Spaghetti Bolognese. Macaroni. And veggie burgers!"*



### ABOUT MATILDA

**What:** A digital food ordering system.

**When:** Launched as a pilot project a year and a half ago.

**Who for:** Matilda is currently installed at two care homes, but the long-term plan is for all the care homes in Trelleborg Municipality to have access to the system.





SUPPLIER OF GOODFOODMOOD®

## THE GOODFOODMOOD COMPANY

At Duni we supply innovative table top concepts, creative packaging and take-away solutions to both professionals and consumers. Everything we create is designed to bring goodfoodmood to occasions where people enjoy eating and drinking.

